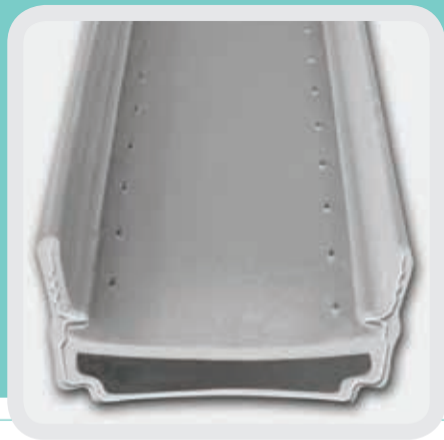


Warm Edge spacer bar

ScreenLine® is the first integrated blind using a Warm Edge spacer bar. This profile, made of stainless steel co-extruded with polypropylene and designed in cooperation with TGI, is able to further enhance the benefits of ScreenLine® systems in terms of energy saving, whilst ensuring a perfect hermetic seal:

- reduces the generation of humidity on the glass perimeter
- improves the thermal insulation of the profile due to its low thermal conductivity
- ensures a low Psi value (halving heat transmission through the perimeter compared to a standard extruded aluminium spacer bar)
- improves the Thermal transmittance value of the window, irrespective of the material used for the frame
- considerably reduces the noise level of slats and the possible generation of dust on their edges when operating the blind



Warm Edge spacer bar

Transmission coefficient (ψ W/Mk) according to the type of window frame

0.054	aluminium
0.045	wood
0.044	PVC

Warm edge spacer bar colour range



Grey (standard)
RAL 7035



Black (optional)
RAL 9005